

iShelter



A Mac OS X program by

Brattoo Propaganda Software

2003-11-12

www.brattoo.com/propaganda

LICENSE

This End-User License Agreement ("EULA") is a legal agreement between you (either an individual or a single entity) and Brattoo Propaganda Software for the iShelter accompanying this EULA, which includes computer software and may include associated media, printed materials, and "online" or electronic documentation ("SOFTWARE PRODUCT" or "SOFTWARE").

By exercising your rights to use the SOFTWARE PRODUCT, you agree to be bound by the terms of this EULA.

If you do not agree to the terms of this EULA, you may not use the SOFTWARE PRODUCT.

SOFTWARE PRODUCT LICENSE

The SOFTWARE PRODUCT is protected by copyright laws and international copyright treaties, as well as other intellectual property laws and treaties. The SOFTWARE PRODUCT is licensed, not sold.

1. GRANT OF LICENSE. This EULA grants you the following rights:
Installation and Use -- You may install and use a single copy of the SOFTWARE PRODUCT.

Reproduction and Distribution -- You may NOT reproduce or distribute copies of the SOFTWARE PRODUCT or its component parts, except and only to the extent that such activity is expressly permitted by applicable law notwithstanding this limitation.

2. DESCRIPTION OF OTHER RIGHTS AND LIMITATIONS.
a) Limitations on Reverse Engineering, Decompilation, and Disassembly:

You may NOT reverse engineer, decompile, or disassemble the SOFTWARE PRODUCT, except and only to the extent that such activity is expressly permitted by applicable law notwithstanding this limitation.

b) Separation of Components:

The SOFTWARE PRODUCT is licensed as a single product -- Its component parts may not be separated for use on more than one computer.

c) Software Transfer:

You may permanently transfer all of your rights under this EULA, provided the recipient agrees to the terms of this EULA. Such transfer must include any and all copies of the SOFTWARE PRODUCT and its component parts.

d) Termination:

Without prejudice to any other rights, Brattoo Propaganda Software, may terminate this EULA if you fail to comply with the terms and conditions of this EULA.

In such event, you must destroy all copies of the SOFTWARE PRODUCT and all of its component parts.

3. COPYRIGHT.

All title and copyrights in and to the SOFTWARE PRODUCT (including, but not limited to, any images, photographs, animations, video, audio, music, text, and "applets" incorporated into the SOFTWARE PRODUCT), the accompanying printed materials, and any copies of the SOFTWARE PRODUCT are owned by Brattoo Propaganda Software, or its suppliers.

The SOFTWARE PRODUCT is protected by copyright laws and international treaty provisions. Therefore, you must treat the SOFTWARE PRODUCT like any other copyrighted material.

4. U.S. GOVERNMENT RESTRICTED RIGHTS.
The SOFTWARE PRODUCT and documentation are provided with RESTRICTED RIGHTS.

Use, duplication, or disclosure by the Government is subject to restrictions as set forth in subparagraph (c)(1)(ii) of the Rights in Technical Data and Computer Software clause at DFARS 252.227-7013 or subparagraphs (c)(1) and (2) of the Commercial Computer Software-Restricted Rights at 48 CFR 52.227-19, as applicable.

Manufacturer is: Brattoo Propaganda Software

5. LIMITED WARRANTY. NO WARRANTIES.
Brattoo Propaganda Software, expressly disclaims any warranty for the SOFTWARE PRODUCT.

The SOFTWARE PRODUCT and any related documentation is provided "as is" without warranty of any kind, either express or implied, including, without limitation, the implied warranties or merchantability, fitness for a particular purpose, or noninfringement.

The entire risk arising out of use or performance of the SOFTWARE PRODUCT remains with you.

6. NO LIABILITY FOR CONSEQUENTIAL DAMAGES.

In no event shall Brattoo Propaganda Software, or its suppliers be liable for any damages whatsoever (including, without limitation, damages for loss of business profits, business interruption, loss of business information, or any other pecuniary loss) arising out of the use of or inability to use this Brattoo Propaganda Software, product, even if Brattoo Propaganda Software, has been advised of the possibility of such damages.

Because some states/jurisdictions do not allow the exclusion or limitation of liability for consequential or incidental damages, the above limitation may not apply to you.

7. MISCELLANEOUS.
If you acquired this product in the United States, this EULA is governed by the laws of the State of California.

If this product was acquired outside the United States, then local laws may apply.

As the user, I agree that I am responsible for my own actions using iShelter. I agree that I will not use iShelter to infringe on copyright laws. I also agree that Brattoo Propaganda Software will not be responsible for anything I do with iShelter.

Overview

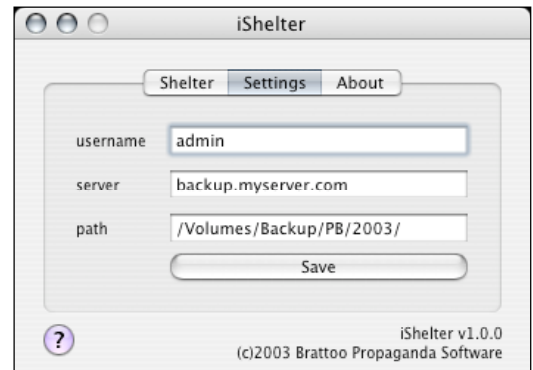
The purpose of iShelter is to give the user an easy way to synchronize/backup precious data in a safe and rapid manner to a server connected to the Internet. iShelter transfers only changed altered and/or new files preserving rights, dates, owner (if run as root). To ensure that the file transfer is safe and rapid all data is compressed and sent via encrypted ssh tunnels.

The interface

The interface consists of two parts, "Shelter", and "Settings".

The Settings tab

The Settings tab let you define where to backup your data. You'll have to define a username (to login), a server and the path on the server where you wish to backup your data. **IMPORTANT**, define your servers settings **BEFORE** trying to backup your data. Also, the server has to be ssh enabled (port 22).



The Shelter tab

The Shelter tab consists of only one big "drag files here" field. Drag the files you wish to have secured to the field and they will be transferred to the server that you defined under the Settings Tab. When transferring files a terminal window will open up explaining exactly what is going on and at what speed.

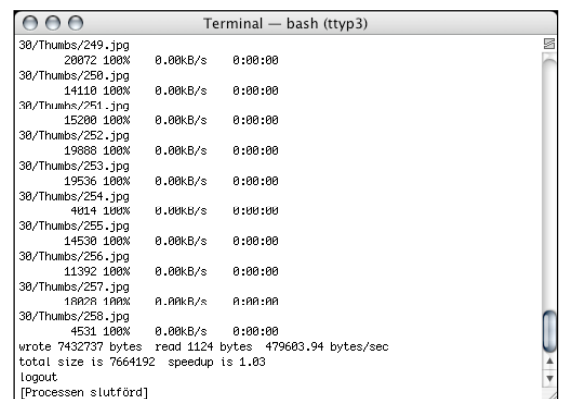
You may drag both files and folders to the "drag" field but it's important that you only drag **ONE** item at a time i.e. one file or one folder.



When the transfer starts you will be asked for your password to the chosen server, that password is used to open the ssh (secure shell) tunnel. You may avoid this by using SSH keys, find out how in the Hint section.

The Result window

The Result window is a terminal window giving you a hint on the backup progress, transfer speed etc.



Hint

Since the transfer is using SSH you may want to create ssh keys so that you will not have to login every time you synchronize/backup you files. This is easily done by performing the following steps:

1. open up a terminal window
2. type "ssh-keygen -t dsa"
3. copy the file "~username/.ssh/id_dsa.pub" to the remote server. (copy may be done by using for example ftp or scp)
4. login to the remote server
5. type "cat id_dsa.pub >> ~username/.ssh/authorized_keys2"
6. type "chmod 644 ~username/.ssh/authorized_keys"
7. you should now be able to use iShelter (and use ssh) to the remote server without any password request.

Find out more about ssh and automatic login at <http://www.bluegum.com/Software/ssh-auth.html>